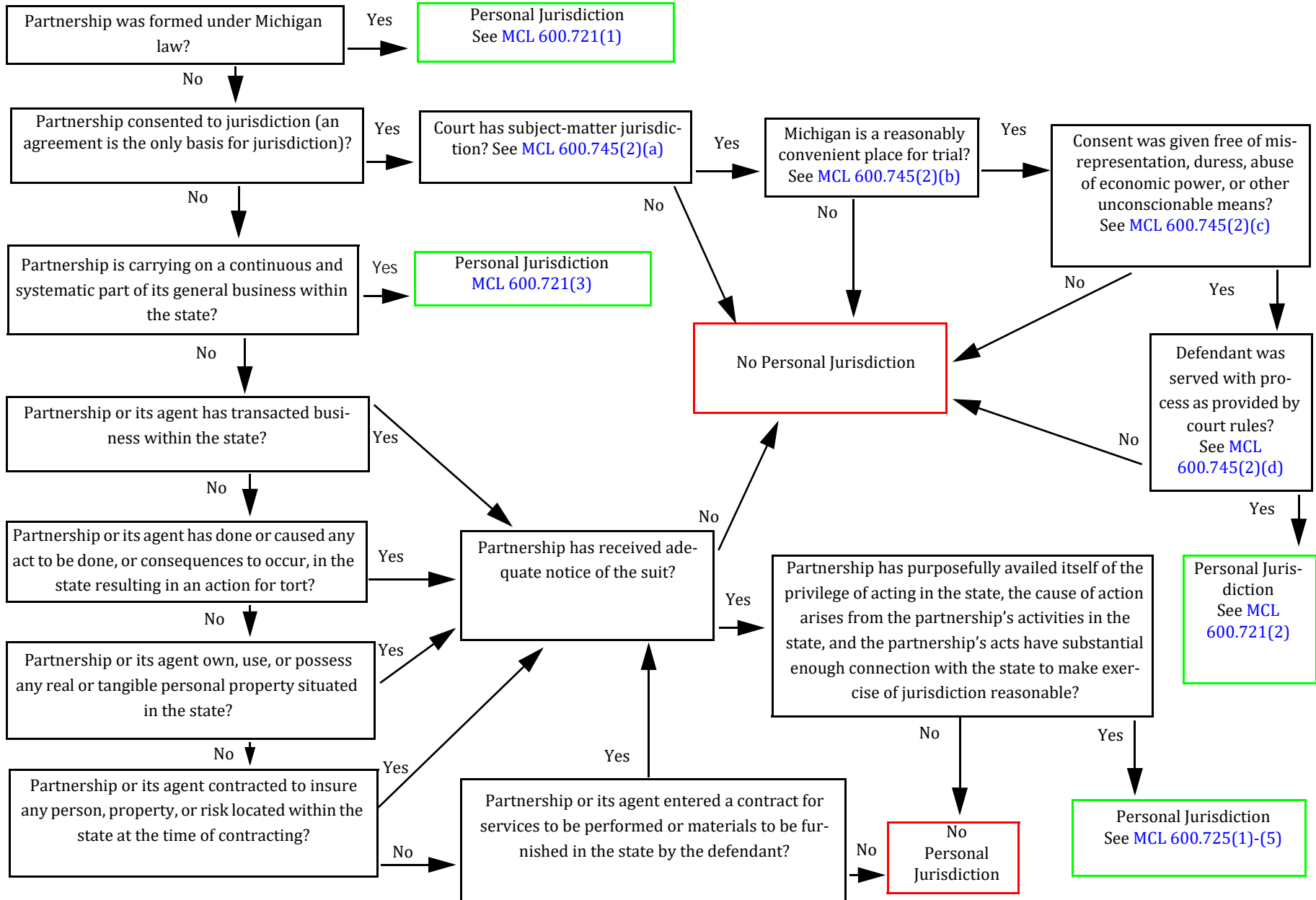


# Personal Jurisdiction of Partnerships or Limited Partnerships Flowchart

See the Michigan Judicial Institute's *Civil Proceedings Benchbook*, Chapter 2, for more information on personal jurisdiction.



**Authorities:**

*Glenn v TPI Petroleum, Inc*, 305 Mich App 698, 707-709 (2014)

*Lease Acceptance Corp v Adams*, 272 Mich App 209 (2006)

*Turcheck v Amerifund Fin, Inc*, 272 Mich App 341 (2006)

*Electrolines, Inc v Prudential Assurance Co, Ltd*, 260 Mich App 144, 166-167 (2003)

*Oberlies v Searchmont Resort*, 246 Mich App 424, 432 (2001)

*Mullane v Central Hanover Bank & Trust Co*, 339 US 306, 313 (1950)

*Kruger v Williams*, 410 Mich 144, 158 (1981)

*Int'l Shoe Co v Washington*, 326 US 310, 316 (1945)

*Jeffrey v Rapid American Corp*, 448 Mich 178, 185-186 (1995)